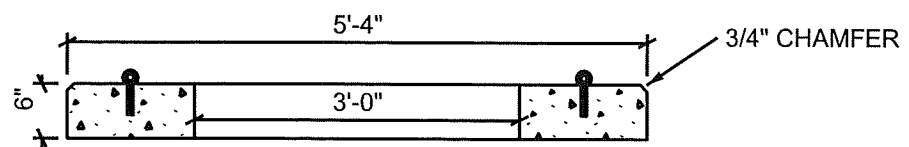


PLAN



SECTION

NOTES:  
 REINFORCEMENT TO BE  
 #4 REBAR @ 12" OCEW  
 WEIGHT = APPROX: 1200 LBS.

REBAR & MESH					
BAR#	MARK	LENGTHS			
		QTY.	BEND	LENGTH	WEIGHT
4		5		5'	
4		4		3'	
4		3		1'4"	
4		2		1'6"X1'X1'6"	

	1122 BRADWAY ROAD. NORTH POLE, AK.99705 PH:488-9763 FAX:488-8300
	SCALE: NO SCALE
DATE 1/22/2010	REVISED: 1/22/2010
<b>GVEA UM1-1</b>	