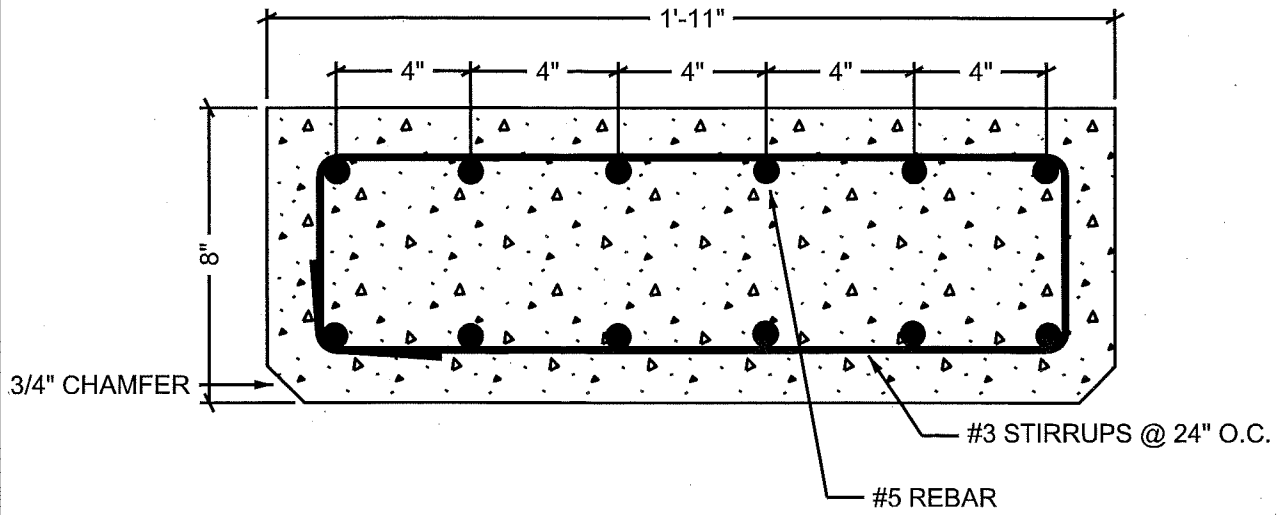


BROOM FINISH TO TOP OF RAMP


1 1/2" PVC PIPE


PLAN VIEW
16' BOAT RAMP PLANK

- NOTES:
 (1) REBAR SHALL BE WIRE TIED TO STIRRUPS.
 (2) THERE SHALL BE NO LESS THAN 1" OF CONCRETE COVER OVER REINFORCING STEEL.
 (3) WEIGHT 3075 LBS.



SECTION VIEW
16' BOAT RAMP PLANK

REBAR & MESH					
BAR#	MARK	LENGTHS			
		QTY.	BEND	LENGTH	WEIGHT
#3		10	—		
#5		12			

	1122 BRADWAY ROAD, NORTH POLE, AK.99705 PH:488-9763 FAX:488-8300
	SCALE: NO SCALE DATE 1/25/2010
16' BOAT RAMP PLANK	