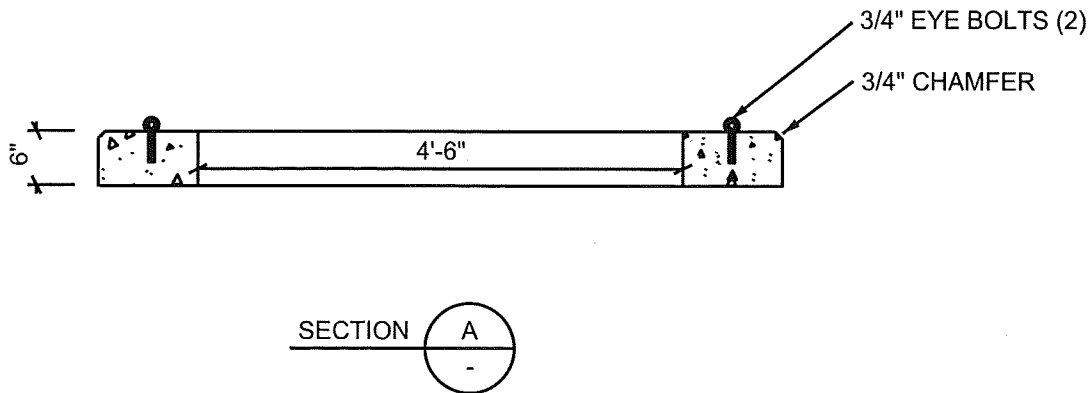


NOTES:
 REINFORCEMENT TO BE
 #4 REBAR @ 12" OCEW
 WEIGHT: APPROX: 1800 LBS.



REBAR & MESH					
BAR#	MARK	LENGTHS			
		QTY.	BEND	LENGTH	WEIGHT
4		6		6'	
4		5		2'-9"	
4		4		4'-2"	
4		2		1'8"X1'-3"X1'8"	



**Fairbanks
 Precast & Rebar**

1122 BRADWAY ROAD.
 NORTH POLE, AK.99705
 PH:488-9763
 FAX:488-8300

SCALE: NO SCALE

DRAWN BY: T.E.C.

DATE 1/22/2010

REVISED: 2/10/2010

GVEA UM1-2