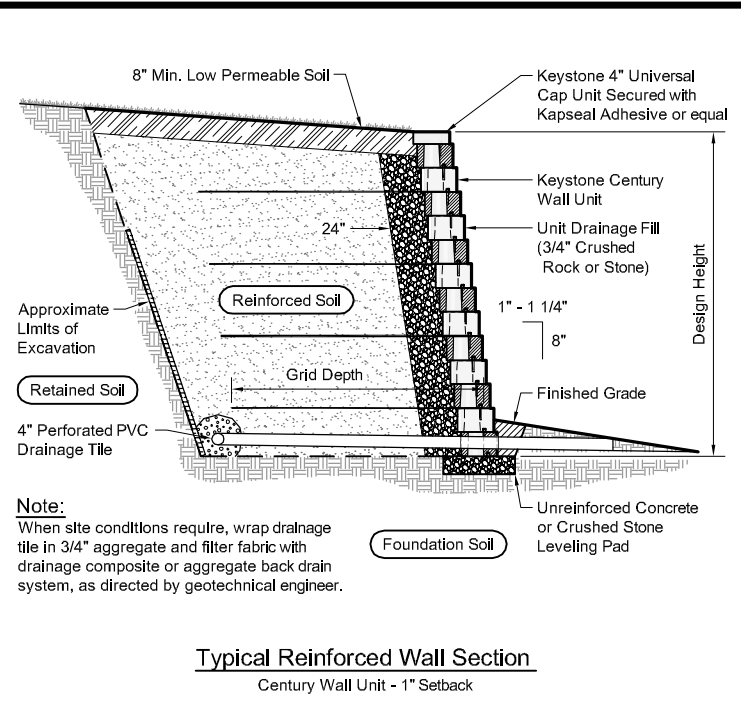
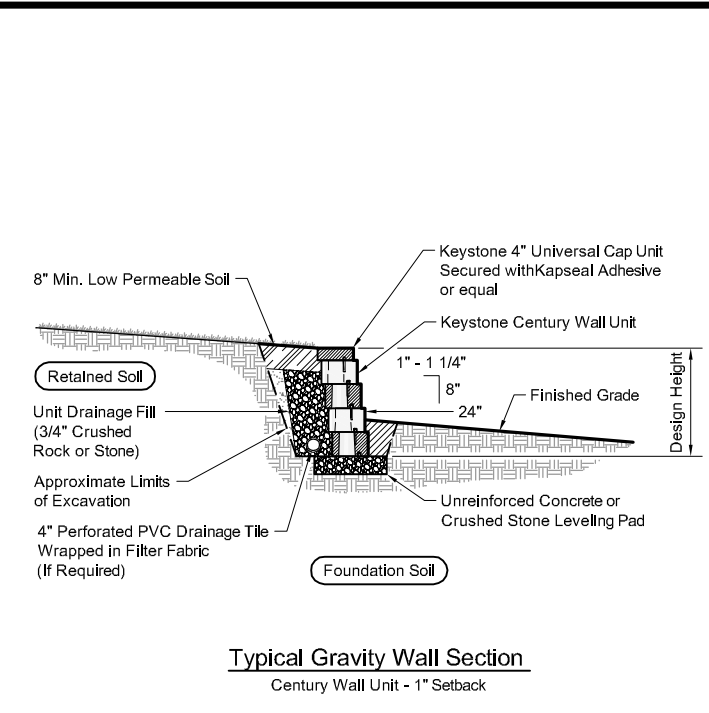


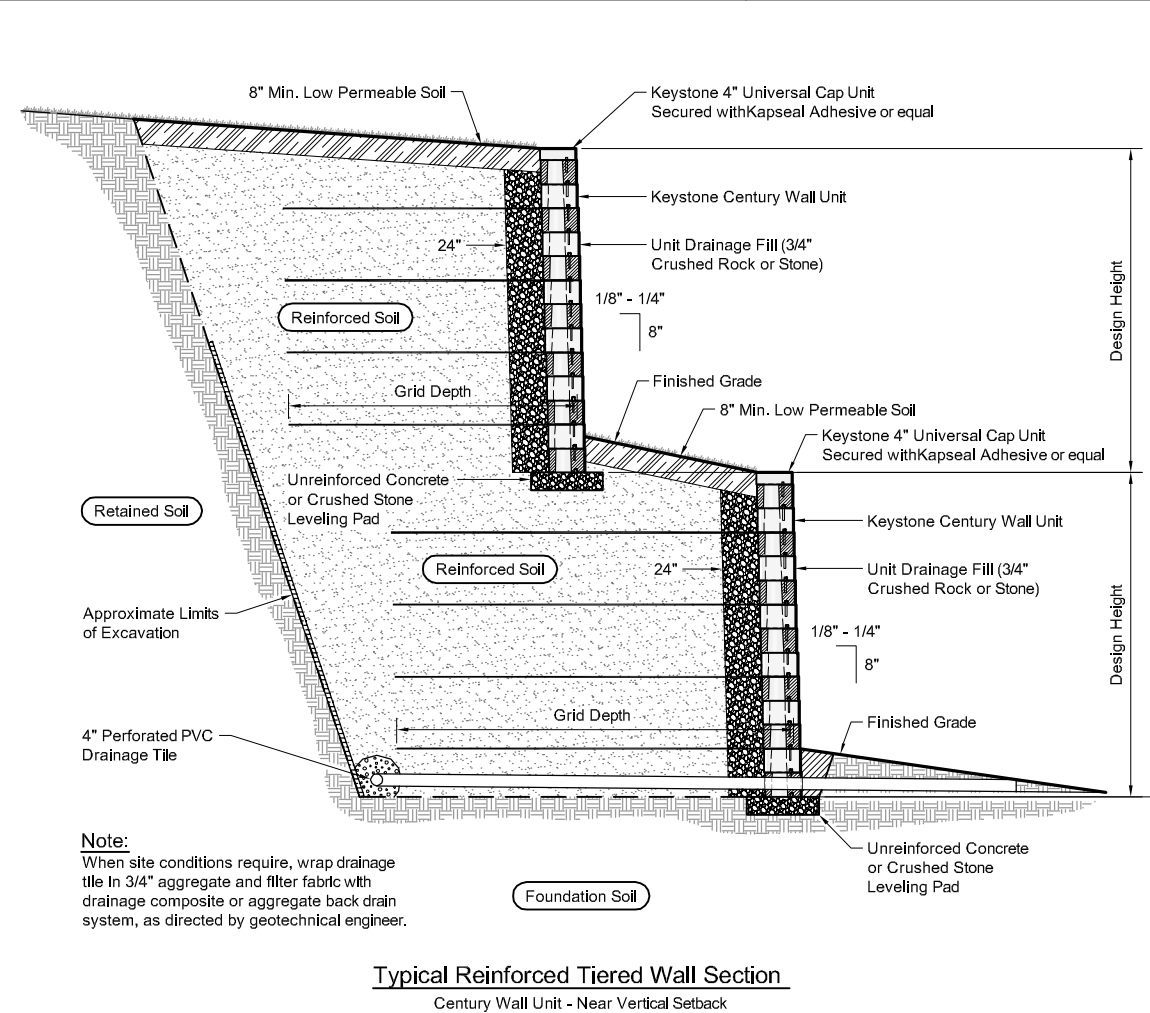
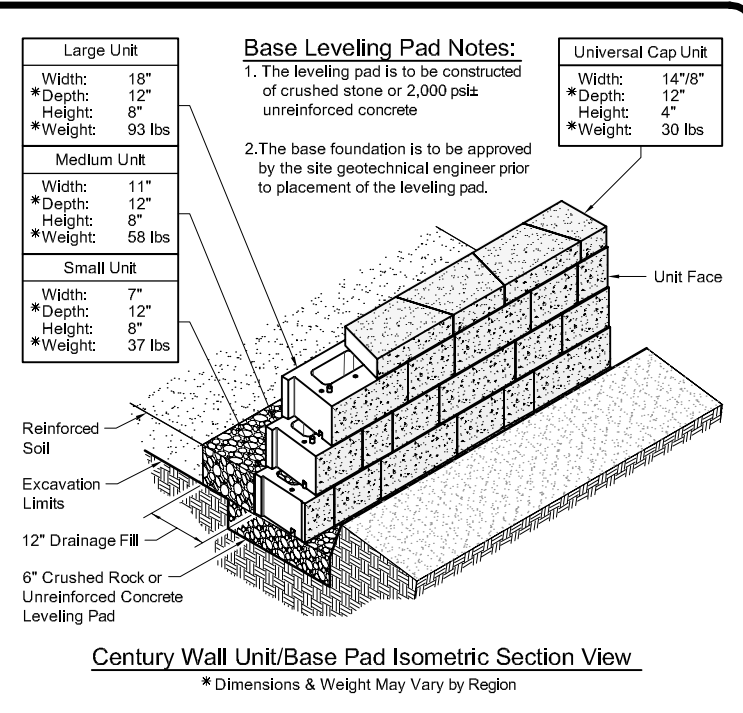
Typical Reinforced Wall Section
Century Wall Unit - Near Vertical Setback



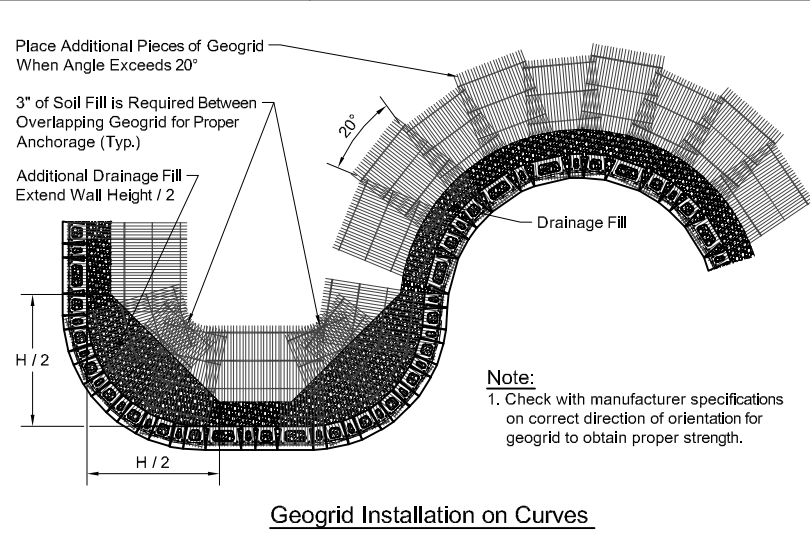
Typical Reinforced Wall Section
Century Wall Unit - 1" Setback



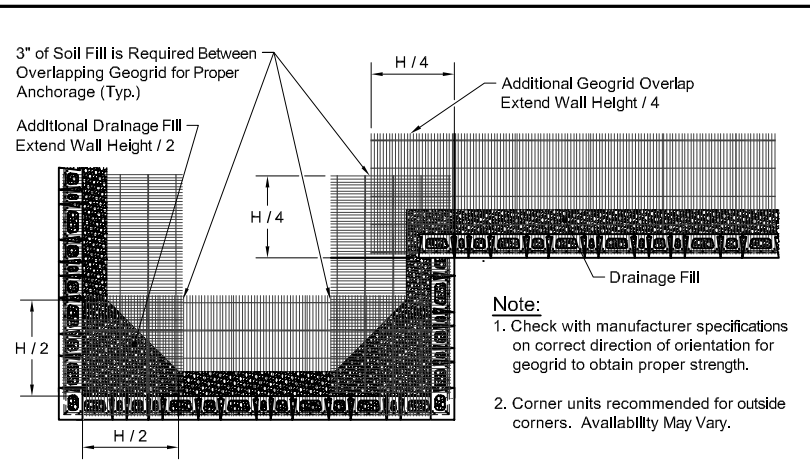
Typical Gravity Wall Section
Century Wall Unit - 1" Setback



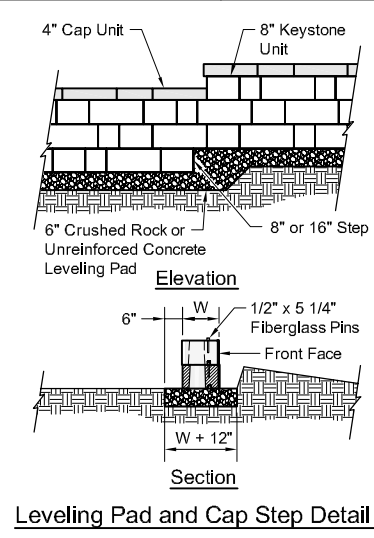
Typical Reinforced Tiered Wall Section
Century Wall Unit - Near Vertical Setback



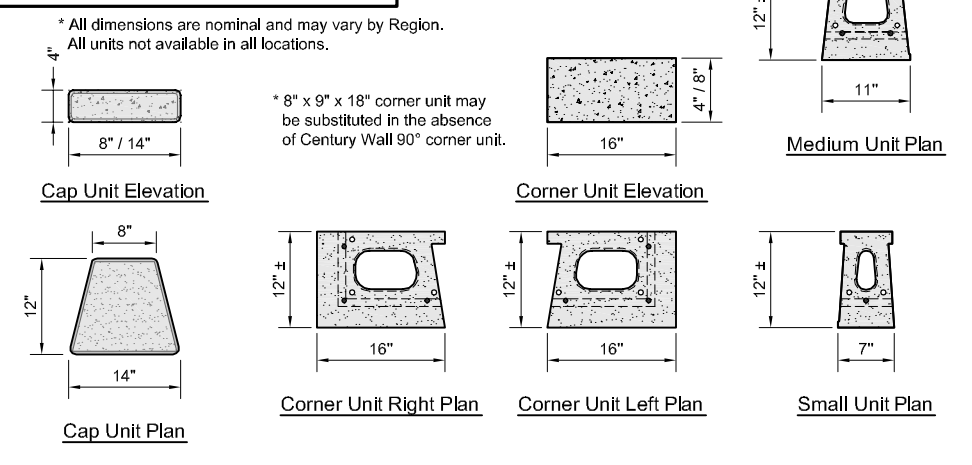
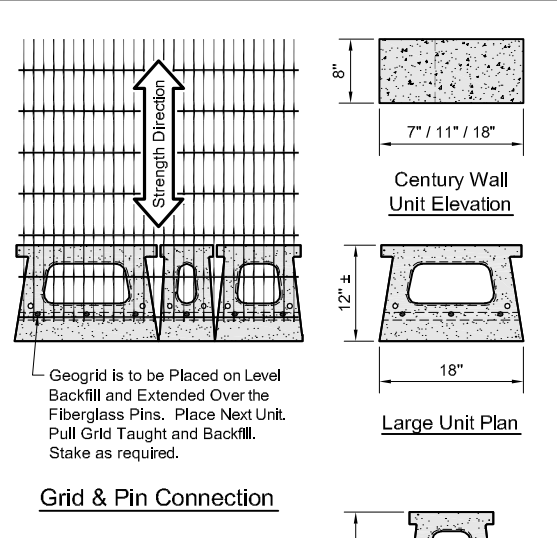
Geogrid Installation on Curves



Geogrid Installation at Corners



Leveling Pad and Cap Step Detail



Copyright 2005 Keystone Retaining Wall Systems

Design is for internal stability of the KEYSTONE wall structure only. External stability, including but not limited to foundation and slope stability is the responsibility of the Owner. The design is based on the assumption that the materials within the retained mass, methods of construction, and quality of materials conform to KEYSTONE's specification for this project.

This drawing is being furnished for this specific project only. Any party accepting this document does so in confidence and agrees that it shall not be duplicated in whole or in part, nor disclosed to others without the consent of Keystone Retaining Wall Systems, Inc.

No.	Date	Revision	By



Designed By: RKM	Title: Century Wall Unit - Details	Date:
Checked By: CDM	Project: Keystone Retaining Wall Systems Typical Wall Details	Project No:
Scale: No Scale		Drawing No: