



Wind-Devil[®] 2

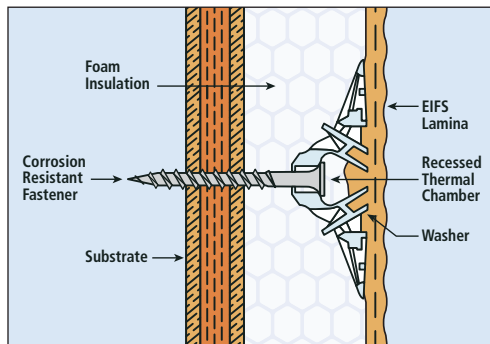
Fastening System



The original and industry-leading, two-inch-diameter fastener, the Wind-Devil 2 system is by far the most popular and technologically advanced EIFS mechanical fastening system on the market. The patented "bullseye" closure arms create a thermal chamber to protect the EIFS lamina and allow easy, efficient backing out of any screw, whenever necessary, saving valuable time and money.

PRODUCT FEATURES

- ▶ The original and best EIFS fastener since 1985
- ▶ ASTM E330 rated for highest quality assurance
- ▶ Fastener and plate assemblies for wood, lite metal, steel and masonry
- ▶ Perfect for overhead application
- ▶ All weather application -20°F to +120°F; it works when you can't



Installation of the Wind-Devil 2 fastener compresses the foam under the washer, forming a "gasket" around the fastener. This gasketing action diverts moisture from the fastener.

WHY THE WIND-DEVIL 2 IS BEST!

- Comprehensive witness testing
- Over 20 years of proven performance
- EIFS manufacturers and industry approved
- Significant negative wind-load resistance
- Recessed thermal chamber prevents thermal bridging
- Patented closure arms allow for easy "backing" out
- Saves a day of labor. You can apply the base coat and mesh on the same day.



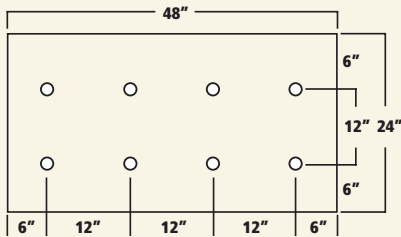
1055 Leisch's Bridge Road • Leesport, PA 19533
610-926-6815 • 1-800-872-5625 • Fax: 1-800-854-6614
www.wind-lock.com



Wind-Devil[®] 2

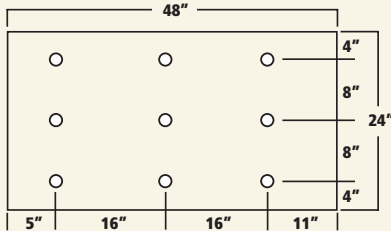
Fastening System

TYPICAL WIND-DEVIL 2 FASTENING PATTERNS



PATTERN A:

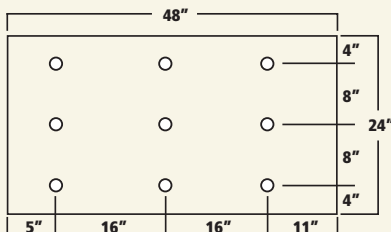
Wood sheathing, masonry and some metal sidings.



PATTERN B:

16" o.c. stud fastening pattern.

Note: For pattern "B" stud fastening over non-screwable sheathing, fastener spacing does not exceed 16" o.c. variable not to exceed 11".



PATTERN C:

Wood sheathing, masonry and some metal sidings.

WIND-DEVIL 2 ORDERING INFORMATION

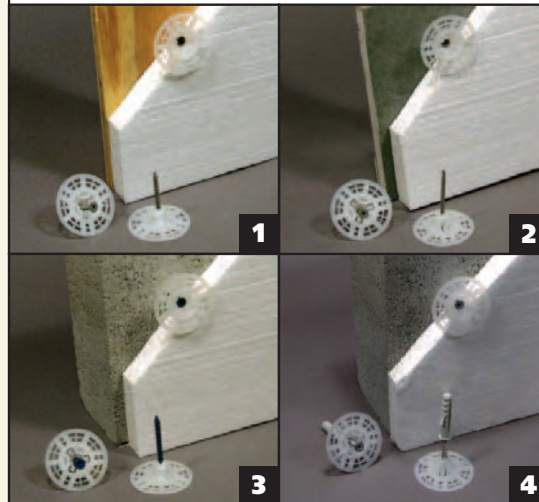
Insulation Thickness	Wood/Lite Metal Series	Steel Series	Masonry Series
1"	WLMT-1	ST-1*	MT-1
1-1/2"	WLMT-2	ST-2*	MT-2
2"	WLMT-3	ST-3*	MT-3
2-1/2"	WLMT-4	ST-4*	MT-4
3"	WLMT-5	ST-5*	MT-5
3-1/2"	WLMT-7	ST-6*	
4"	WLMT-7	ST-7*	
4-1/2"	WLMT-7	ST-7*	
5"	WLMT-8	ST-8*	
5-1/2"	WLMT-8	ST-8*	

For virtually any size fastener, contact Wind-lock[®].

*Sizes are for direct application into steel and do not take into account the sheathing. For 1/2" and 5/8" sheathing, move fastener selection to next higher size.

WIND-DEVIL 2 APPLICATIONS

1. Wood and Lite Metal Series
2. Steel Series
3. Masonry Series
4. Masonry Expandable Series



Wind-lock[®] Distributed by:
Your faithful business companion