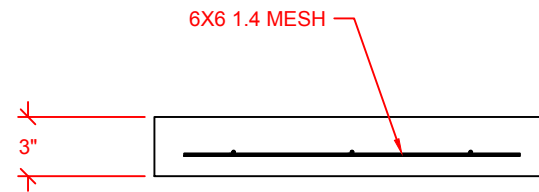



**PLAN VIEW**



**SECTION A-A**

APPROXIMATE WEIGHT: 80 LBS  
 CONCRETE: 5,000 PSI MIX TYPICAL  
 REINFORCEMENT: 6X6 W1.4 WWF (ASTM A-1064)

 <b>Fairbanks Precast &amp; Rebar</b>	1122 Bradway Rd North Pole, AK 99705 PH: 907-488-9763 Fax: 907-488-8300	
	SCALE: NOT TO SCALE	DRAWN BY: TY JOHNSON
DATE: 1/30/19	REVISED:	
FP&R STOCK ITEM CATALOGUE		
20"Ø PAD	DRAWING NUMBER 1 OF 1	