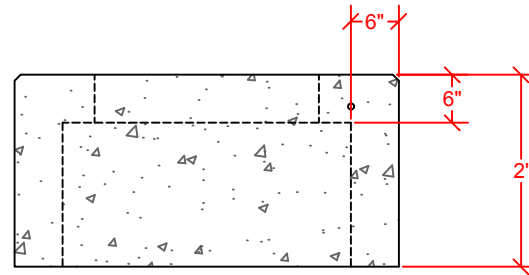



PLAN VIEW



PROFILE VIEW

APPROXIMATE WEIGHT: 2,600 LBS
 CONCRETE: 5,000 PSI MIX
 REBAR: ASTM A615 GRADE 60
 WELDED WIRE FABRIC: ASTM A1064 (6X6 W2.9XW2.9)

 Fairbanks Precast & Rebar	1122 Bradway Rd North Pole, AK 99705 PH: 907-488-9763 Fax: 907-488-8300	
	SCALE: NOT TO SCALE	DRAWN BY: TY JOHNSON
DATE: 11/14/18	REVISED:	
FP&R STOCK ITEM CATALOGUE		
UM1-1 XFMR PAD	DRAWING NUMBER 1 OF 1	