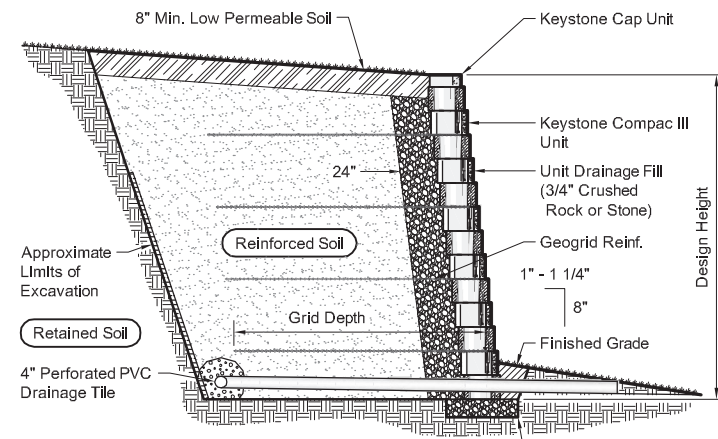


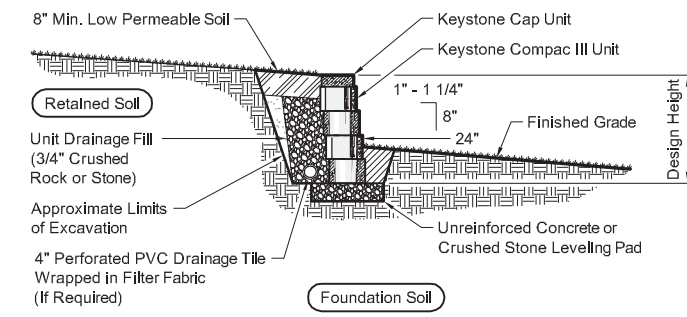
Note:
When site conditions require, wrap drainage tile in 3/4\"/>

Typical Reinforced Wall Section
Compac III Unit - Near Vertical Setback



Note:
When site conditions require, wrap drainage tile in 3/4\"/>

Typical Reinforced Wall Section
Compac III Unit - 1\"/>

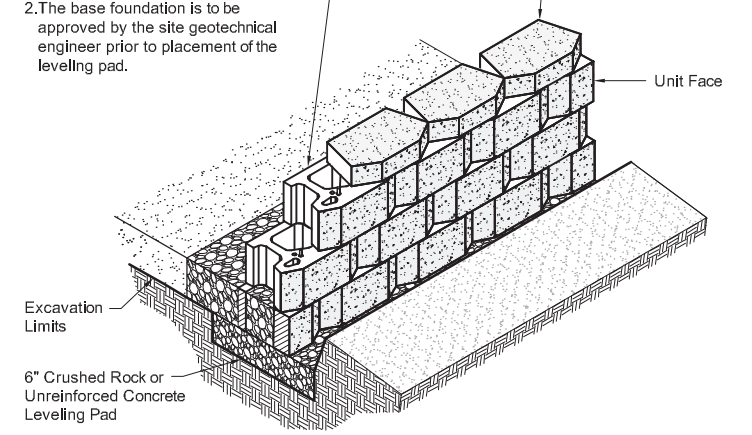


Typical Gravity Wall Section
Compac III Unit - 1\"/>

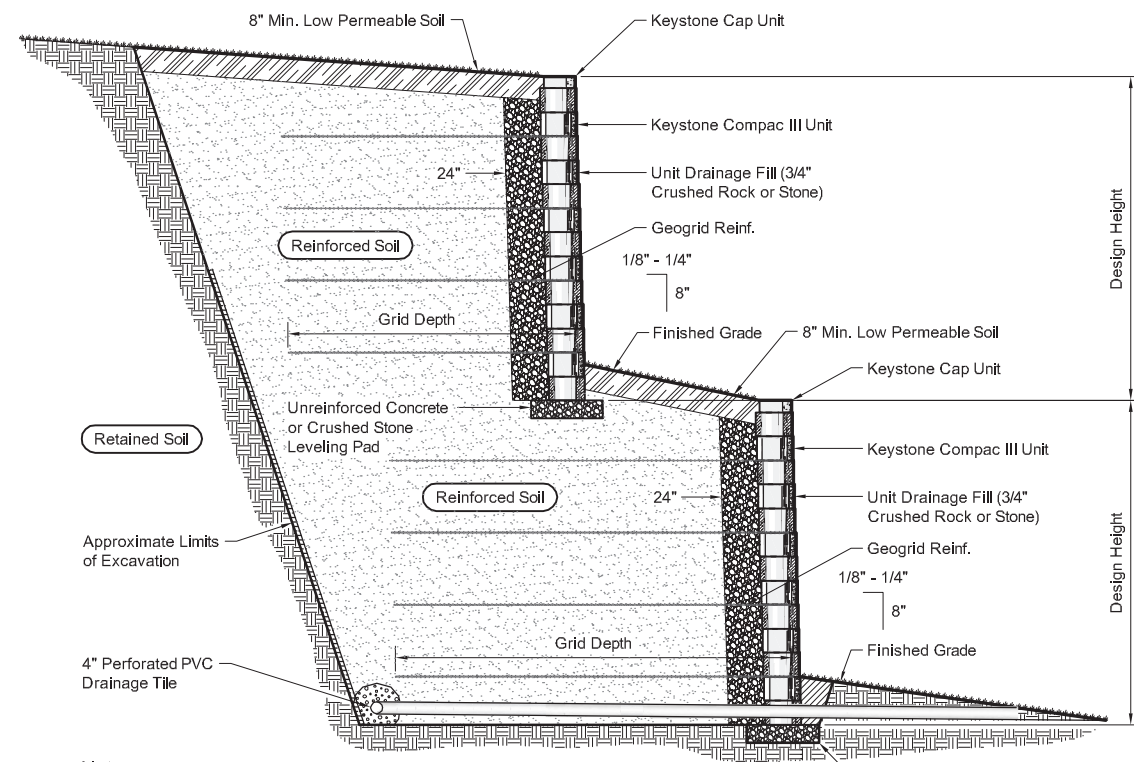
Base Leveling Pad Notes:

- The leveling pad is to be constructed of crushed stone or 2,000 psi ± unreinforced concrete
- The base foundation is to be approved by the site geotechnical engineer prior to placement of the leveling pad.

Compac III Unit		Cap Unit	
Width:	18"	Width:	18"
*Depth:	12"	*Depth:	10 1/2"
Height:	8"	Height:	4"
*Weight:	71 lbs	*Weight:	45 lbs

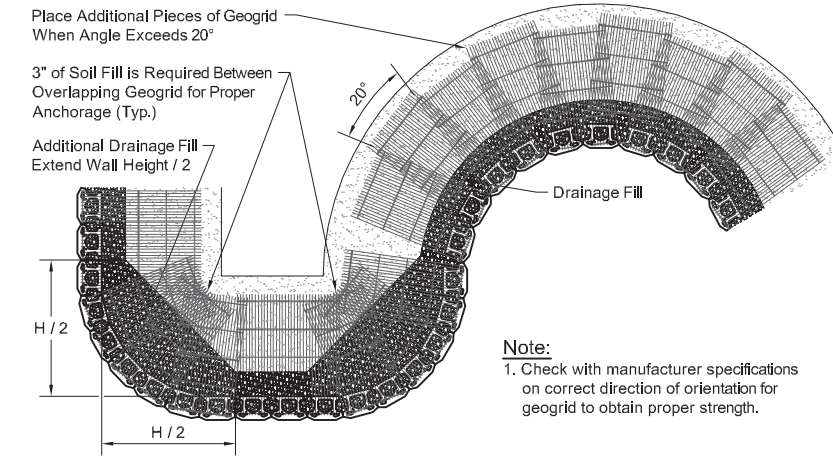


Compac III Unit/Base Pad Isometric Section View
* Dimensions & Weight May Vary by Region



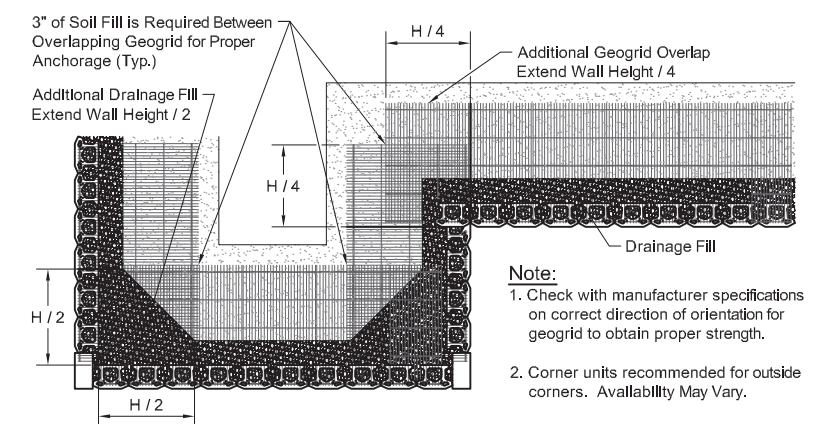
Note:
When site conditions require, wrap drainage tile in 3/4\"/>

Typical Reinforced Tiered Wall Section
Compac III Unit - Near Vertical Setback



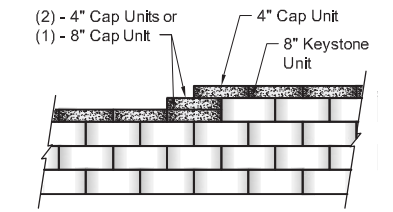
Note:
1. Check with manufacturer specifications on correct direction of orientation for geogrid to obtain proper strength.

Geogrid Installation on Curves



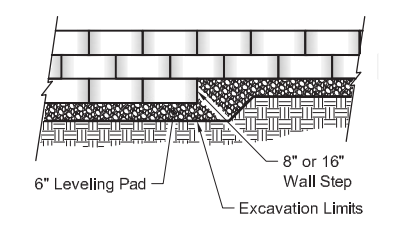
Note:
1. Check with manufacturer specifications on correct direction of orientation for geogrid to obtain proper strength.
2. Corner units recommended for outside corners. Availability May Vary.

Geogrid Installation at Corners

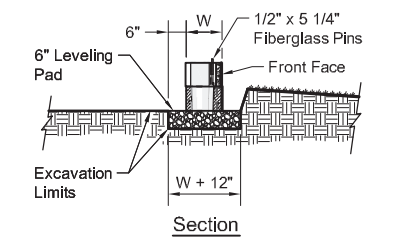


Note:
1. Secure all cap units with Keystone Kapseal or equal.

Top of Wall Steps



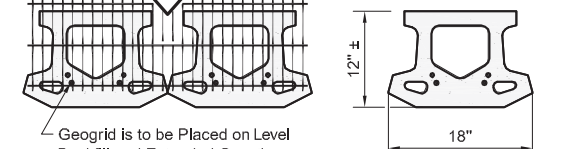
Note:
1. The leveling pad is to be constructed of crushed stone or 2000 psi ± unreinforced concrete.



Leveling Pad Detail



Compac III Elevation

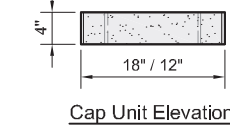


Compac III Plan

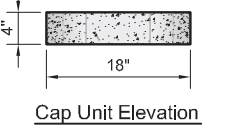


Geogrid is to be Placed on Level Backfill and Extended Over the Fiberglass Pins. Place Next Unit. Pull Grid Taut and Backfill. Stake as required.

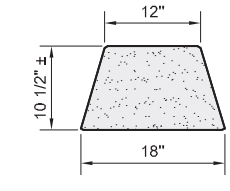
Grid & Pin Connection



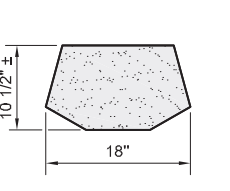
Cap Unit Elevation



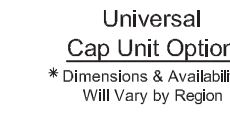
Cap Unit Elevation



Cap Unit Plan



Cap Unit Plan



Universal Cap Unit Option



3-Plane Split Cap Unit Option

Copyright 2010 Keystone Retaining Wall Systems

Design is for internal stability of the KEYSTONE wall structure only. External stability, including but not limited to foundation and slope stability is the responsibility of the Owner. The design is based on the assumption that the materials within the retained mass, methods of construction, and quality of materials conform to KEYSTONE's specification for this project.

This drawing is being furnished for this specific project only. Any party accepting this document does so in confidence and agrees that it shall not be duplicated in whole or in part, nor disclosed to others without the consent of Keystone Retaining Wall Systems, Inc.

No.	Date	Revision	By

KEYSTONE
RETAINING WALL SYSTEMS
A CONTECH COMPANY

4444 W 78th Street
Minneapolis, MN 55435
952-897-1040

Designed By: RKM	Title: Compac III Unit - Tri Plane Face Details	Date:
Checked By: CDM	Project: Keystone Retaining Wall Systems Typical Wall Details	Project No:
Scale: No Scale		Drawing No: